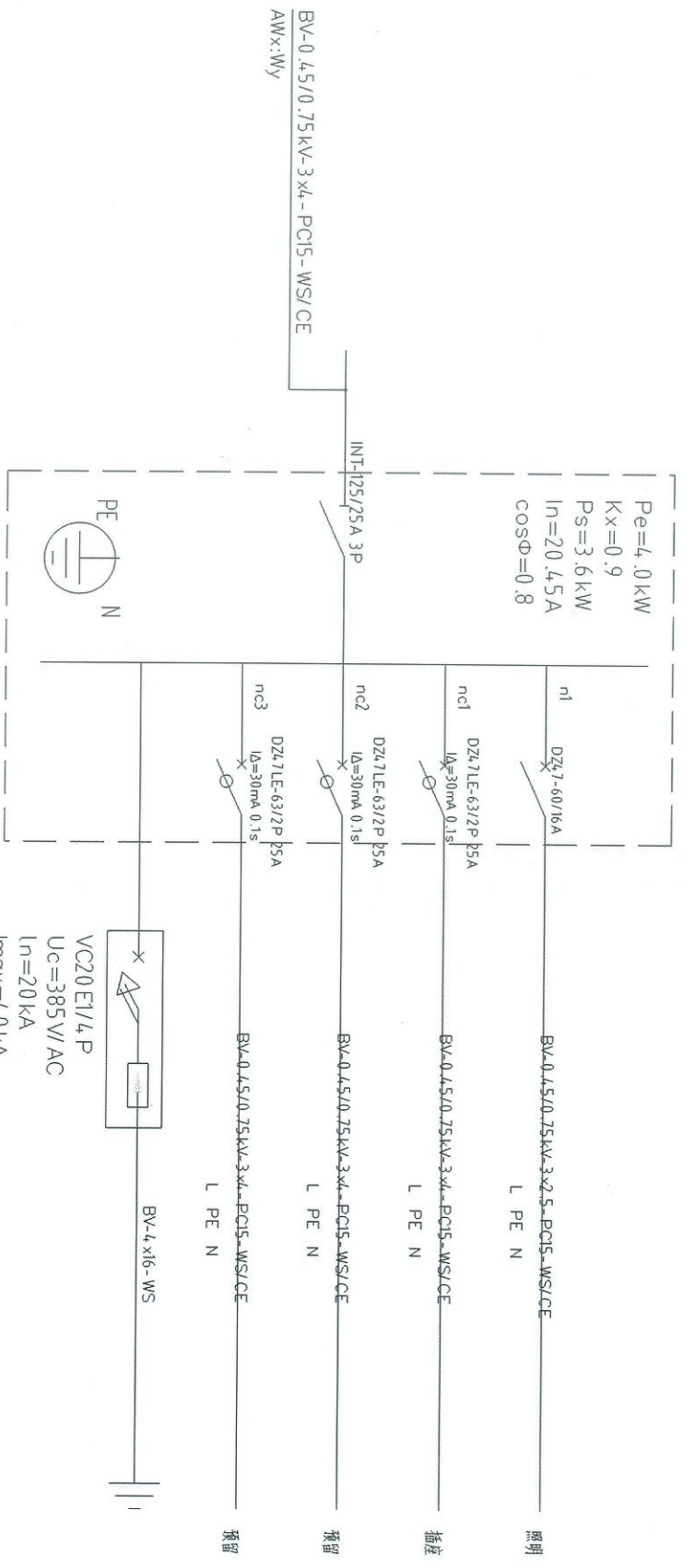


AL1p

预留

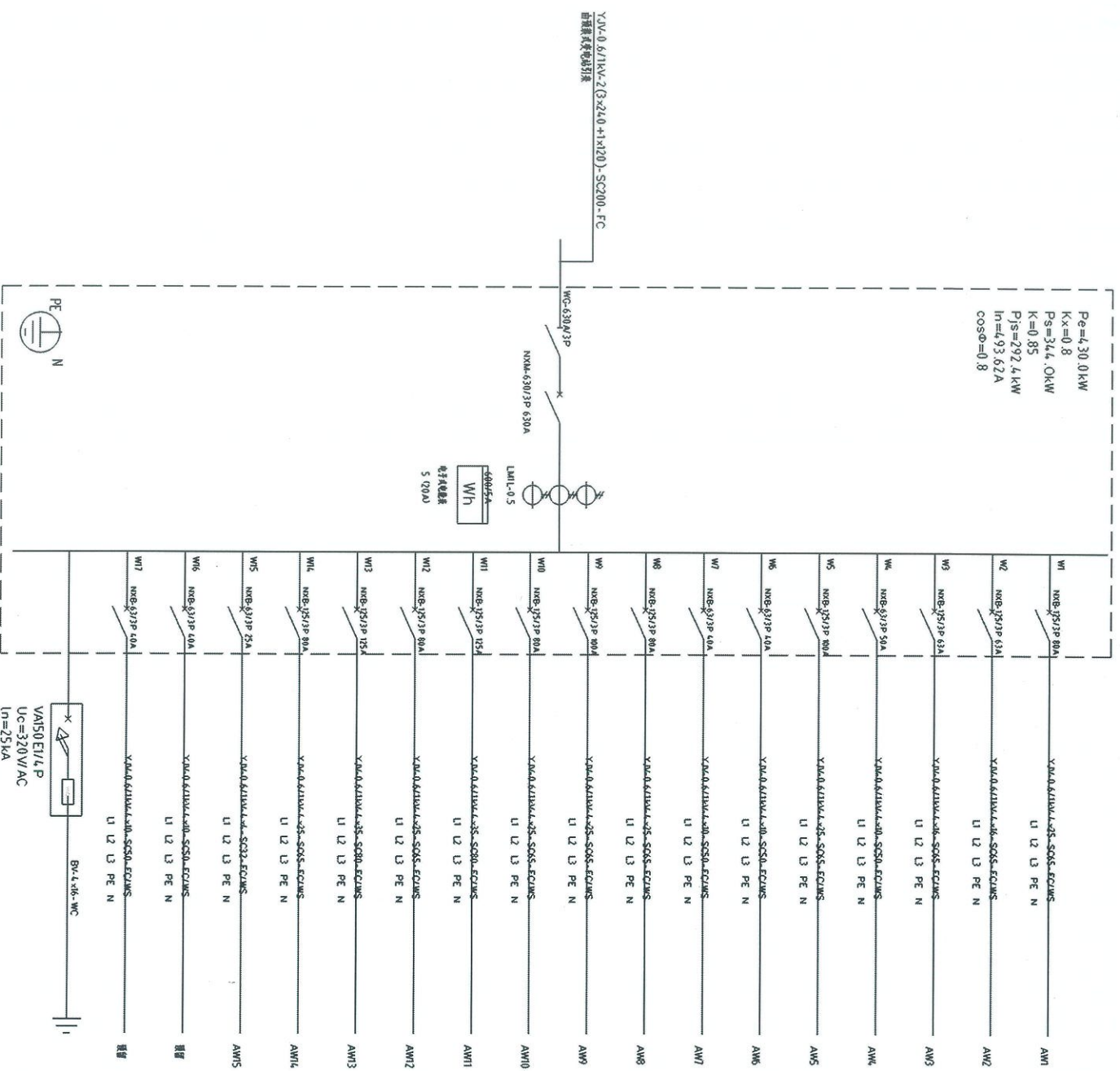


ALn

VC20 ET1/4P
 $U_c = 385V/AC$
 $I_n = 20kA$
 $I_{max} = 4.0kA$
 $U_p = 1.8kV$
 $8/20 \mu s$
 III级试验

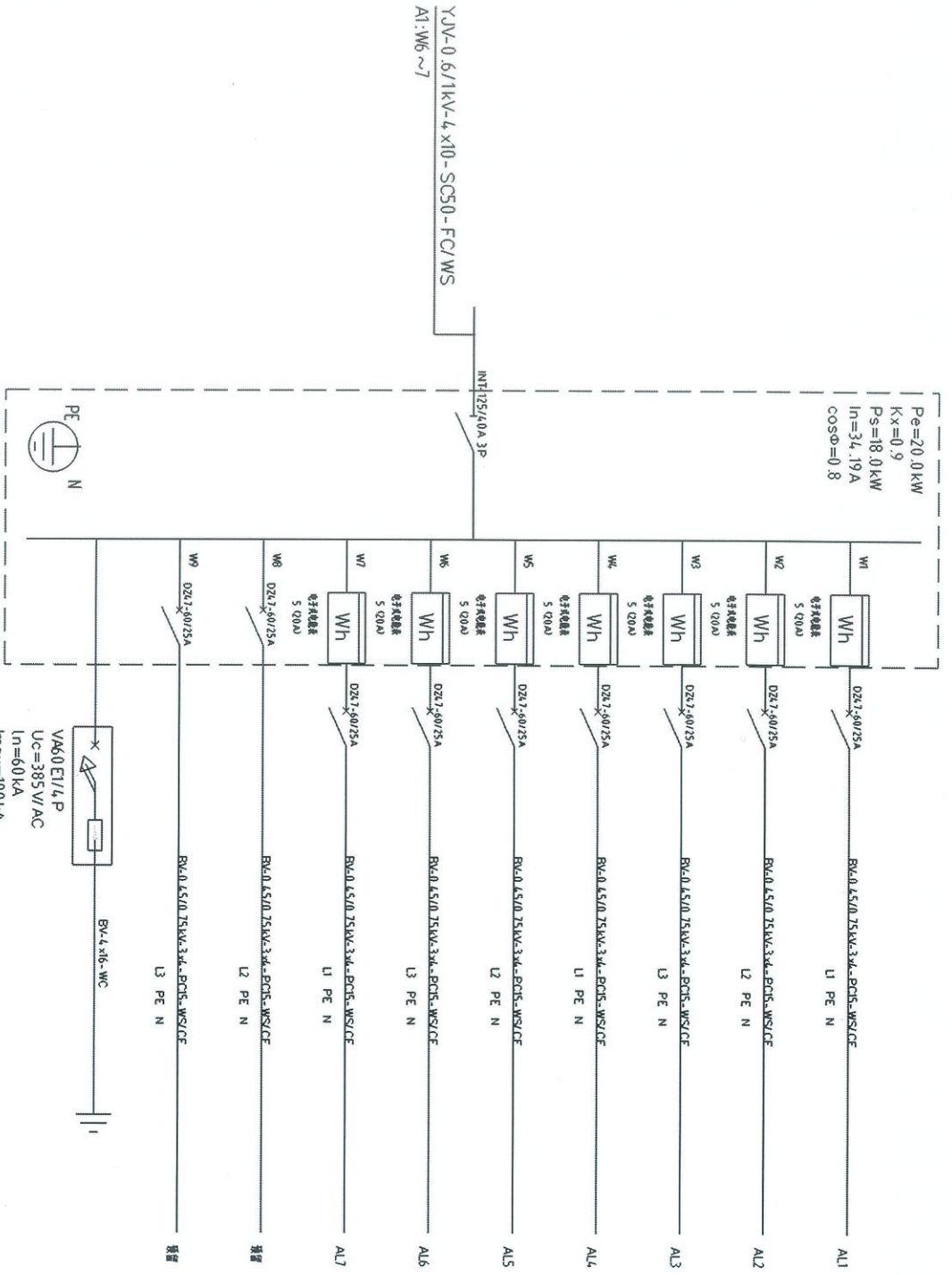
注: x、y、n为系统图中各不同位置的编号。

$P_e=430.0\text{ kW}$
 $K_x=0.8$
 $P_s=344.0\text{ kW}$
 $K=0.85$
 $P_j=292.4\text{ kW}$
 $I_n=493.62\text{ A}$
 $\cos\phi=0.8$



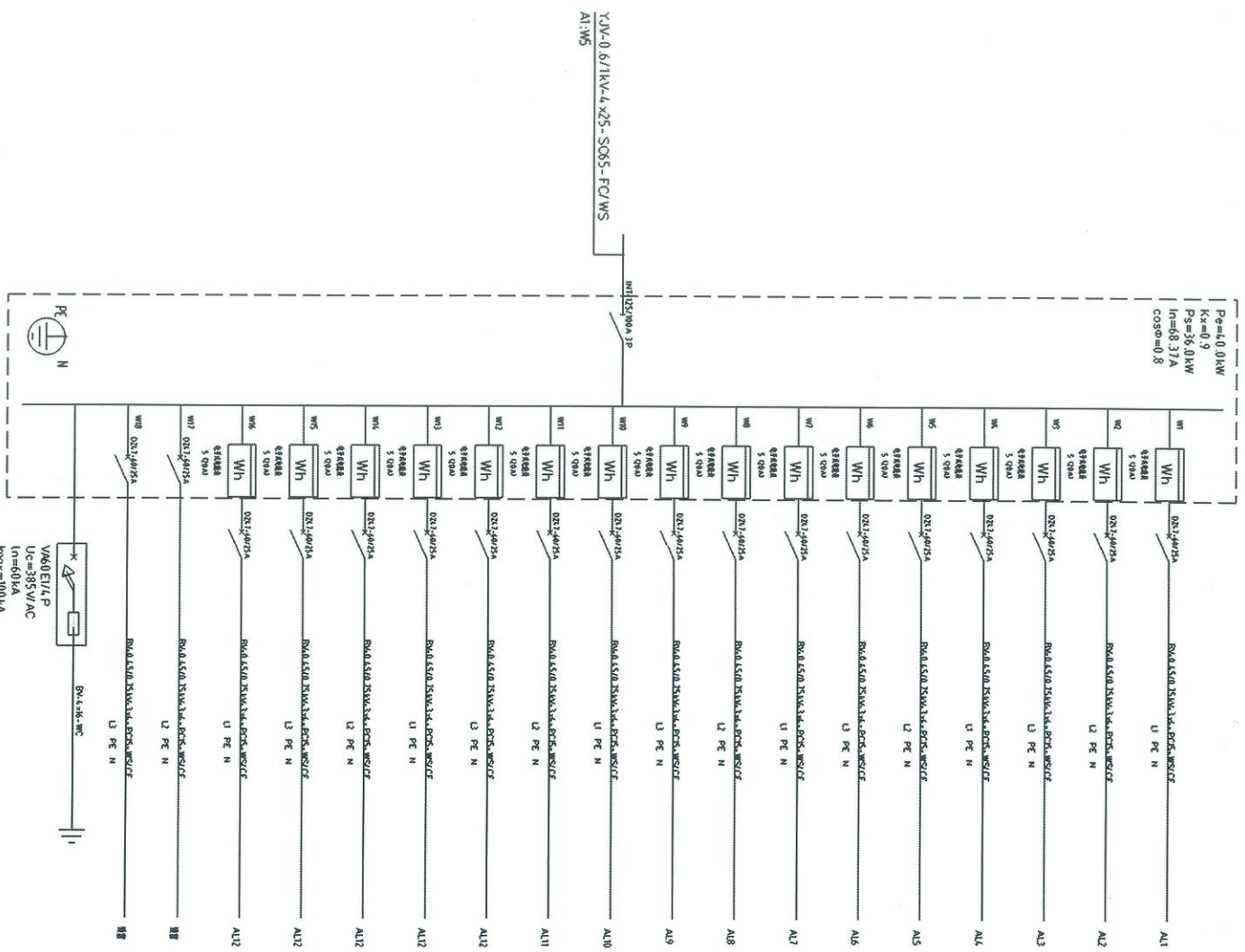
A1

$P_e = 20.0 \text{ kW}$
 $K_x = 0.9$
 $P_s = 18.0 \text{ kW}$
 $I_n = 34.19 \text{ A}$
 $\cos\phi = 0.8$



AW6 ~ 7

$P_e=4.01kW$
 $K_x=0.9$
 $P_e=36.01kW$
 $I_n=68.37A$
 $\cos\phi=0.8$

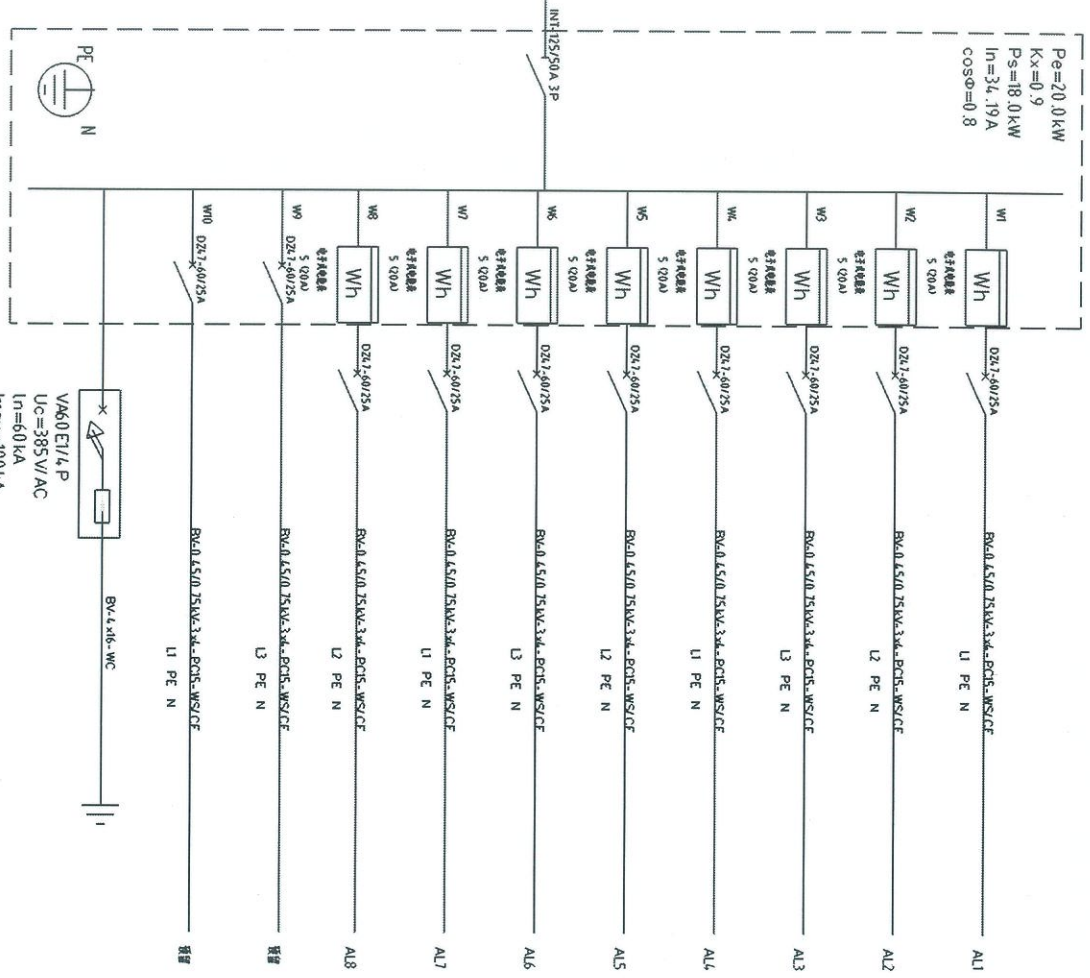


VAK0E1/LP
 U_c=385V/AC
 I_n=60kA
 U_{nom}=100kA
 U_{sp}=2.5kV
 812015
 川儀電器

AW5

$P_e=20.0\text{ kW}$
 $K_x=0.9$
 $P_s=18.0\text{ kW}$
 $I_n=34.19\text{ A}$
 $\cos\phi=0.8$

YJV-0.6/1kV-4x10-SC50-FC/WS
 A1:W4

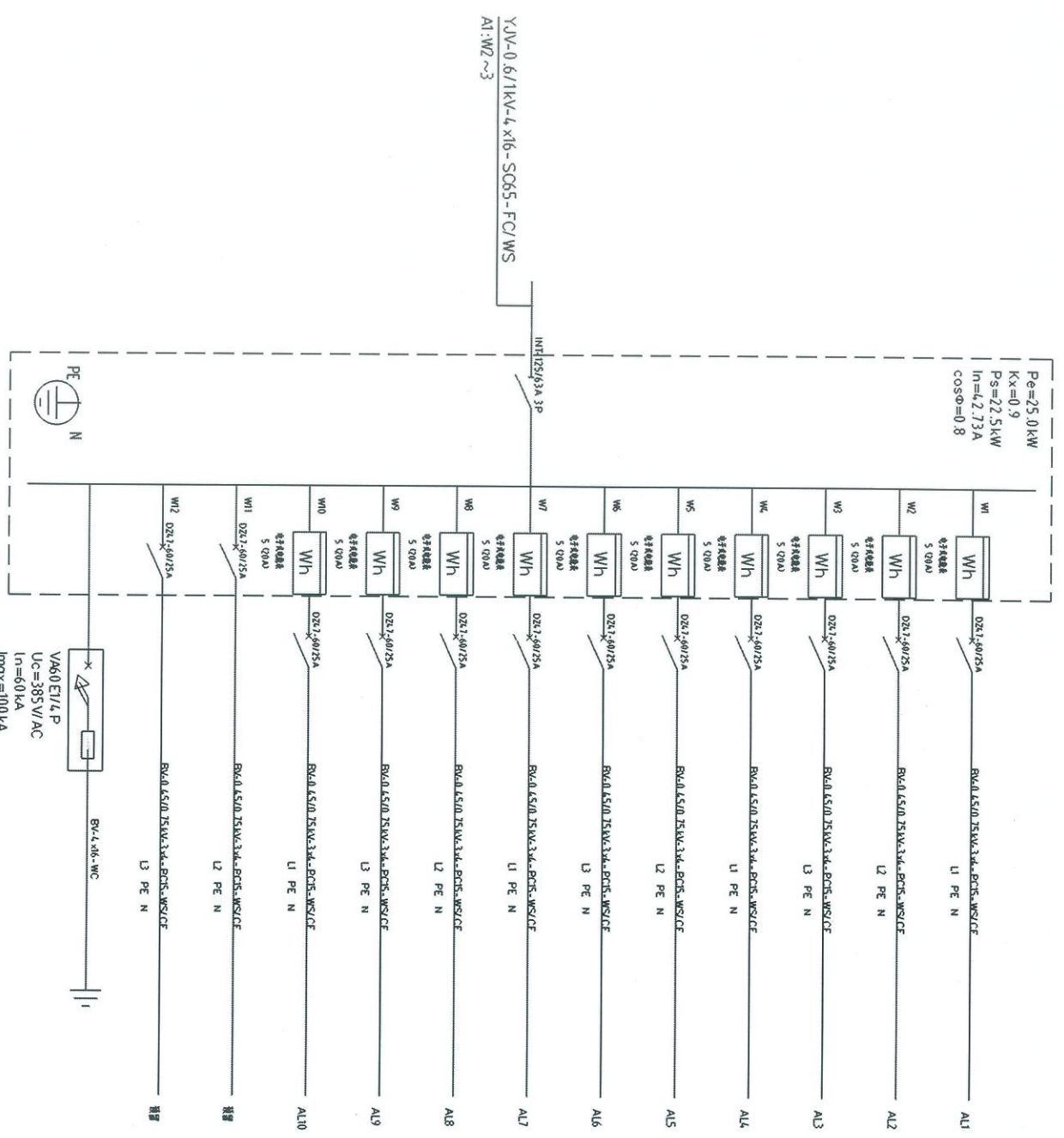


VA60 E1/LP
 Uc=385V/AC
 $I_n=60\text{ kA}$
 $I_{mox}=100\text{ kA}$
 $U_p=2.5\text{ kV}$
 $8/20\text{ }\mu\text{ s}$
 II级试验



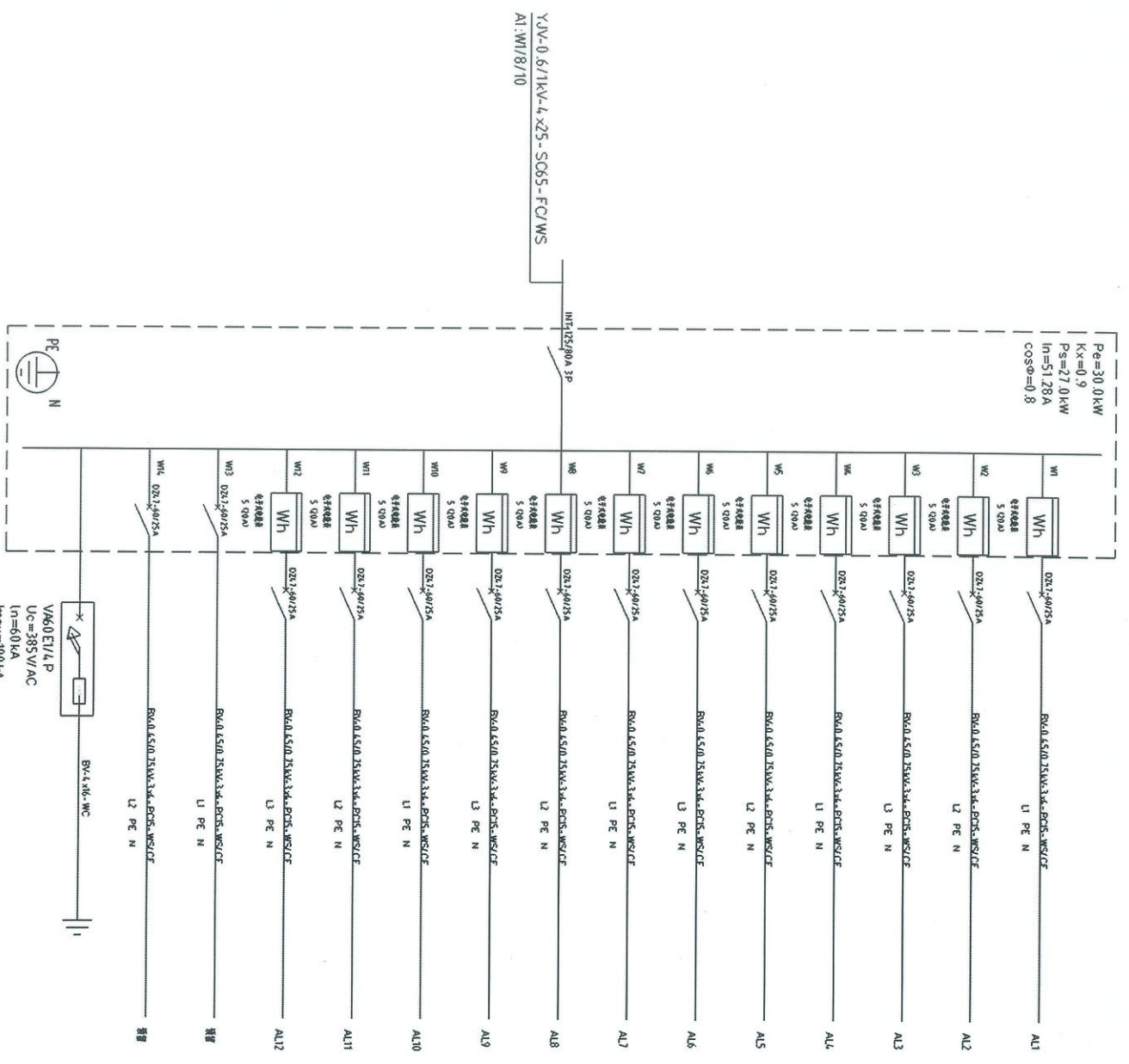
AW4

$P_e = 25.0 \text{ kW}$
 $K_x = 0.9$
 $P_s = 22.5 \text{ kW}$
 $I_n = 42.73 \text{ A}$
 $\cos\phi = 0.8$



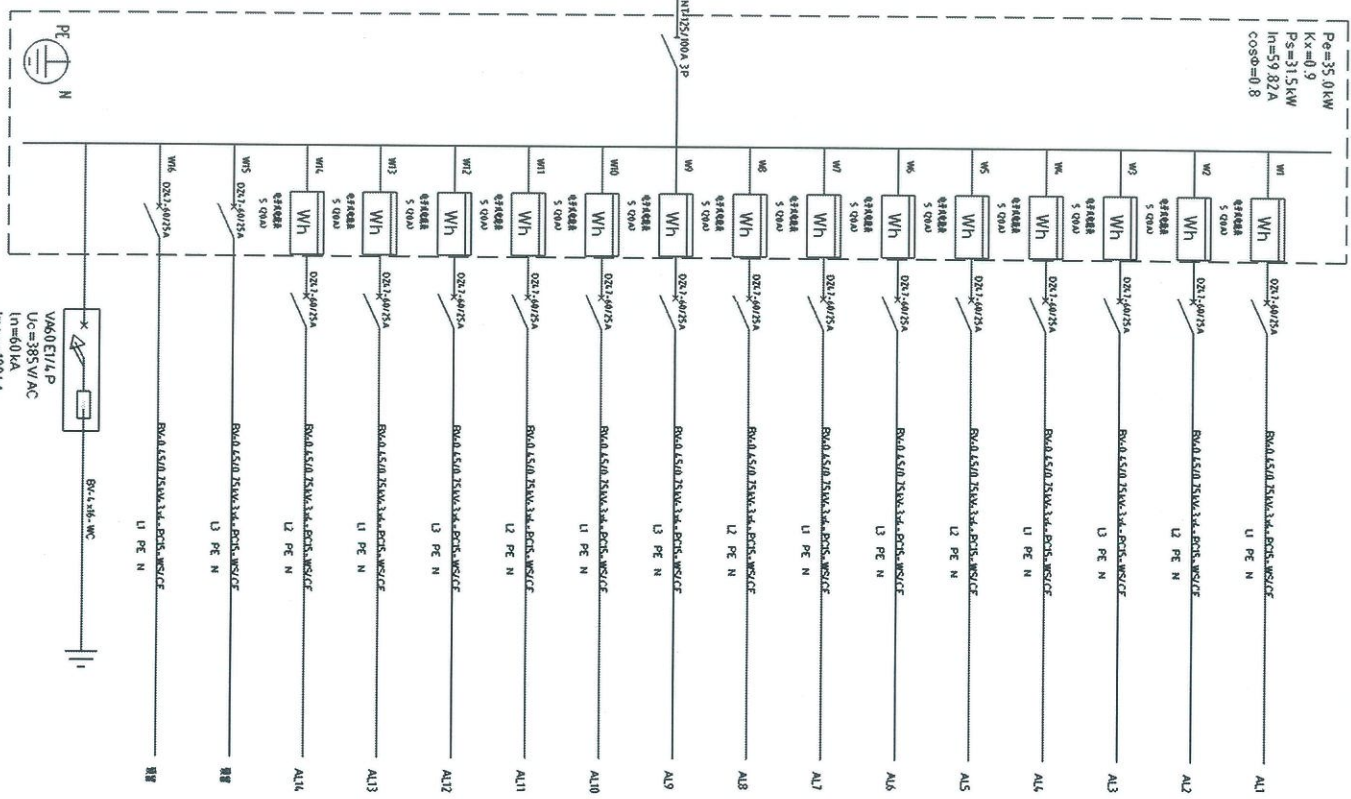
AW2 ~ 3

Pe=30.0kW
Kx=0.9
Ps=27.0kW
In=51.28A
cosφ=0.8



AW1/AW8/AW10

Pe=35.0kW
 Kx=0.9
 Ps=31.5kW
 In=59.82A
 cosφ=0.8



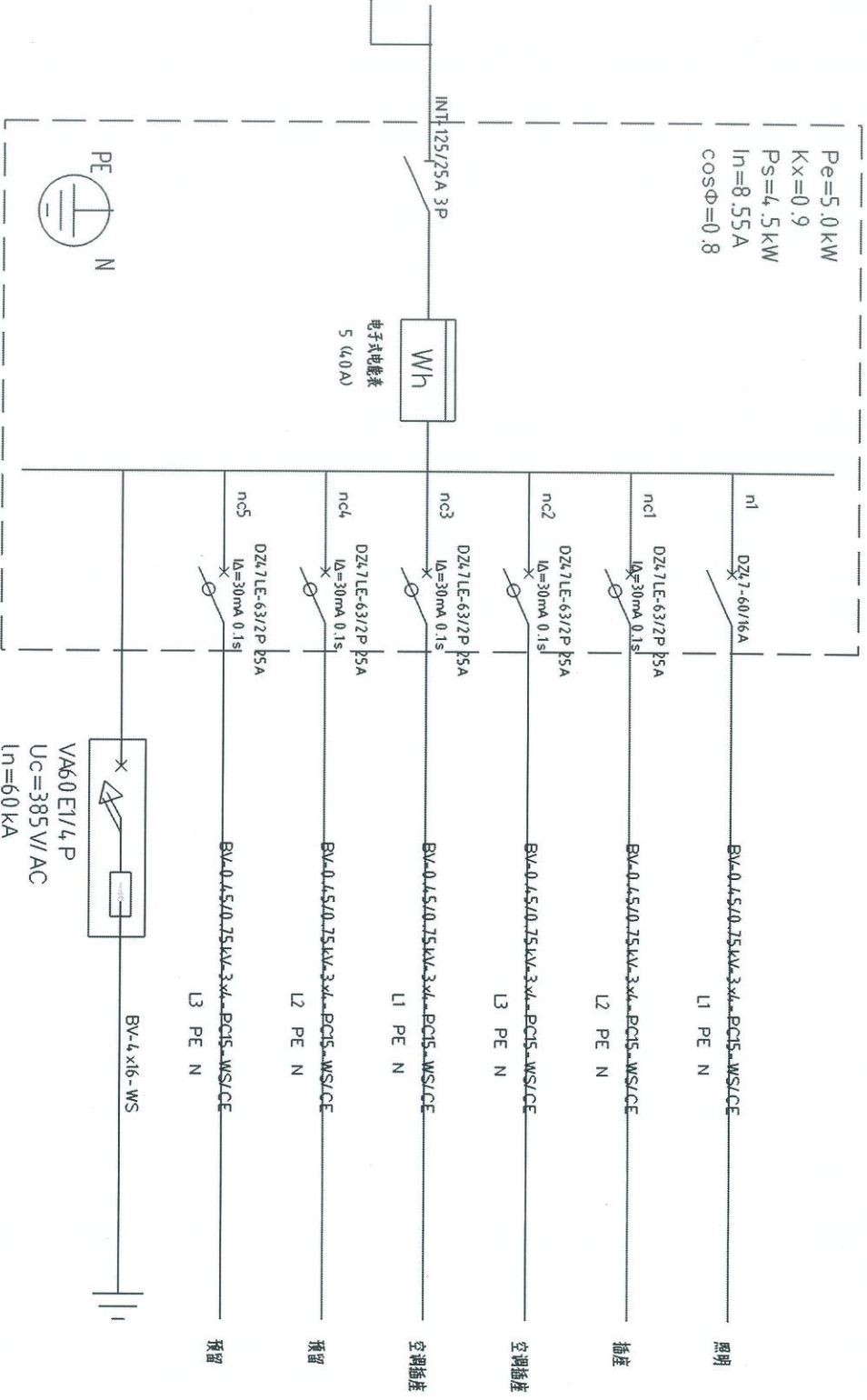
YJV-0.6/1KV-4x25-SG65-FQ/W5
 A1:W9



AW9

$P_e=5.0 \text{ kW}$
 $K_x=0.9$
 $P_s=4.5 \text{ kW}$
 $I_n=8.55 \text{ A}$
 $\cos\phi=0.8$

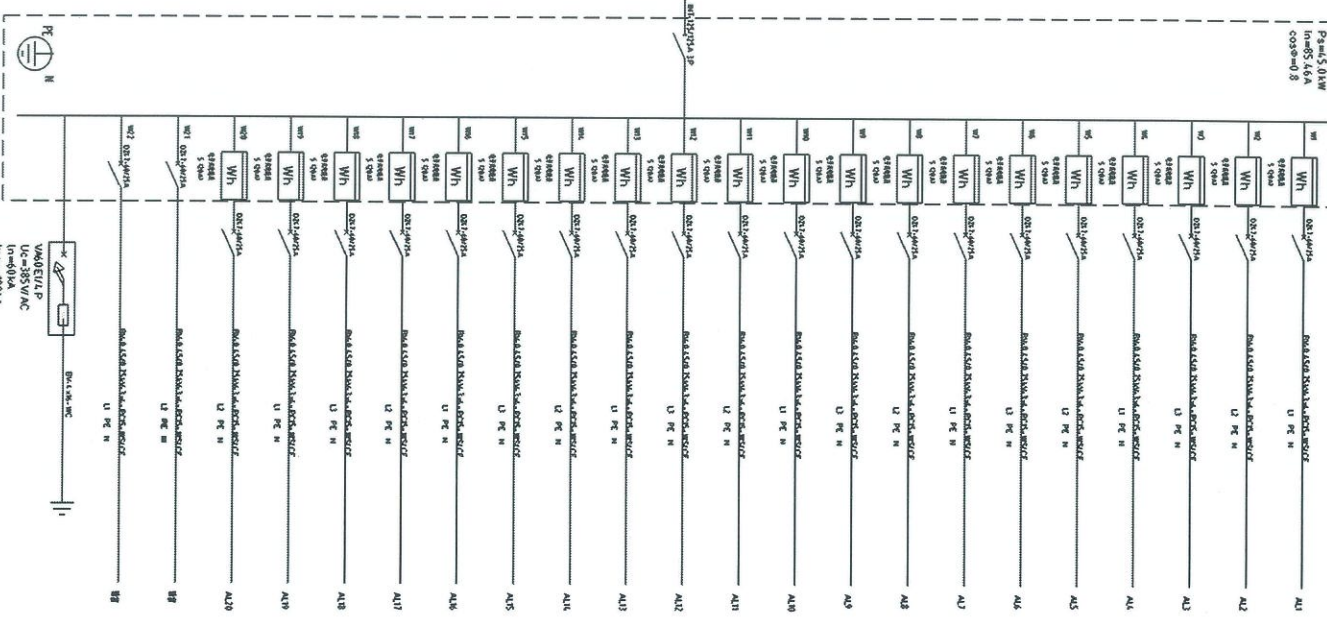
YJV-0.6/1kV-4x4-SC32-FC/WS
 AI:W15



VA60 E1/4 P
 $U_c=385 \text{ V/AC}$
 $I_n=60 \text{ kA}$
 $I_{max}=100 \text{ kA}$
 $U_p=2.5 \text{ kV}$
 $8/20 \mu\text{s}$
 II级试验

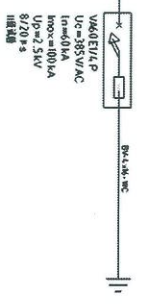
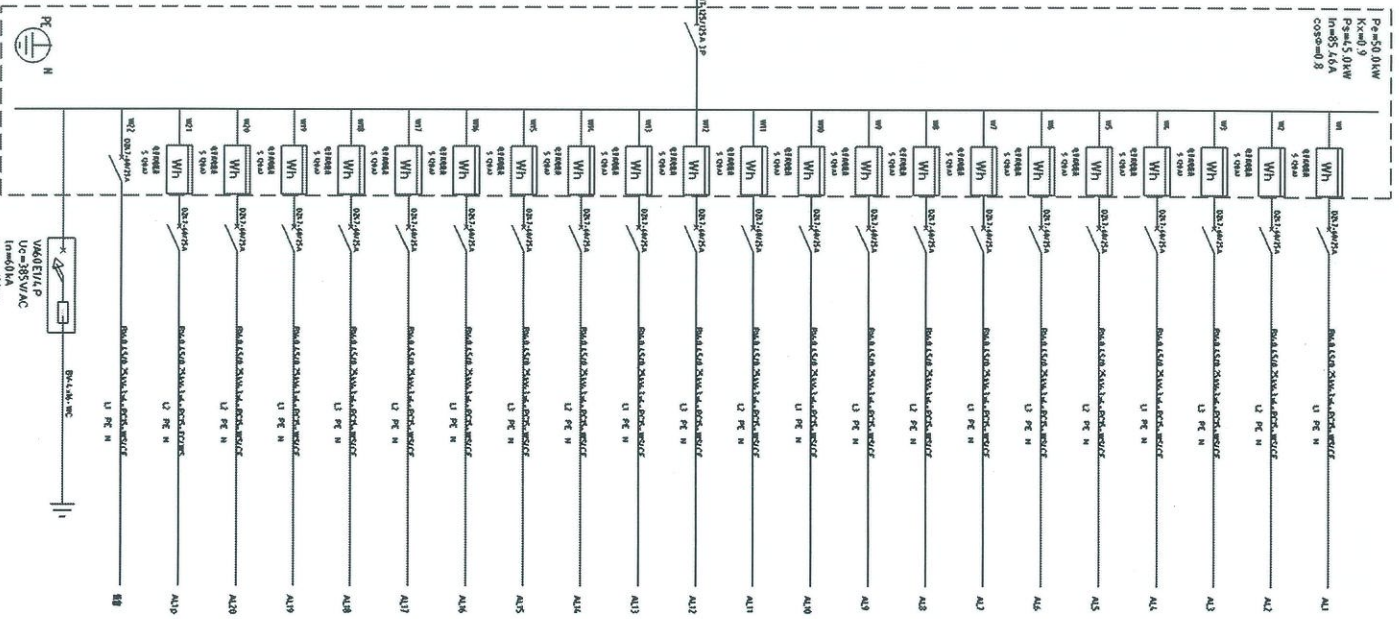
AW15

P=50.0kW
 Pmax=5.0kW
 Im=85.46A
 cosφ=0.8



AWM1~12+14

P=450.0kW
 Kc=0.9
 P=45.0kW
 In=85.46A
 cosφ=0.8



AM13